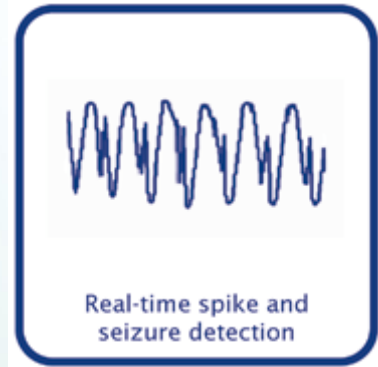
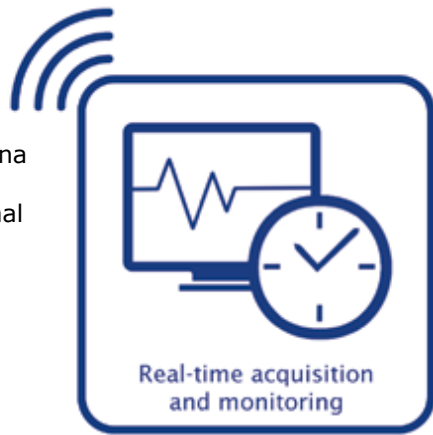


Workflow improvement

In a multiple EEG or PSG station environment, the Sienna range design "philosophy" allows users to move easily between different stations without the need for additional training on separate platforms.

64 CHANNEL Amplifier version



©2019 EMS Handelsgesellschaft mbH, SU Rev042019

NEUROSPEC

Research Neurosciences

**Sienna
ULTIMATE**
Electroencephalograph

World Leading EEG/PSG Amplifier for Routine Clinical, LTM and Ambulatory EEG and Full PSG applications

The "Ultimate" in Flexibility



NEW FOR 2019:

Integrated WiFi+LAN functionality

NEUROSPEC

Research Neurosciences

NEUROSPEC AG www.neurospec.com
Stansstaderstrasse 10 info@neurospec.com
CH-6370 Stans Tel +41 41 371 07 04
Switzerland Fax +41 41 371 07 03

NEUROSPEC AG
Stansstaderstrasse 10
6370 Stans
Switzerland

The world leading hybrid system for ALL EEG and PSG applications

Sienna ULTIMATE Wide range of headboxes



One 32 or 64 channel amplifier can be used for different applications simply by replacing the Amplifier headbox from the complete range of interchangeable Sienna Ultimate headboxes.

The latest 2019 model Sienna Ultimate employs the latest technology to offer the most flexible range of features for ALL EEG and PSG applications within ONE "High Tech" compact Amplifier.



Ambulatory Use

The unique Intercom feature allows direct communication from the patient to nurse station and nurse station to the patient in lab or in a home care environment. Real-time battery charge information is transferred to the nurse station allowing the operator to reduce consumption (switch off Wi-Fi) or to advise the patient to recharge the Amplifier should battery charge get low.

Key Features of 2019 Model Sienna Ultimate

- Provides a minimum 90 hour recording using one external battery in Ambulatory mode
- Up to 4kHz sampling rate per channel for 32 channel Amplifier
- Interchangeable headboxes for different uses/applications
- World's first 64ch Ambulatory Recorder – excellent for 24 hour Epilepsy Ambulatory monitoring
- 2-way communication using built in speaker and microphone (WiFi mode)
- Movement Position sensor built in
- SpO2 Nonin module (option) built in
- HD Video capability (Digital Video option) – 2 Cameras + Digital Zoom



Portable Solution



EEG Headbox

SLEEP (PSG) Headbox

NUMERICAL Headbox

32 / 64 CHANNEL Amplifier

Optional: Combine two 64 channel Sienna Ultimate amplifiers for 128 channel recording.

10/20 System Headbox

Includes LED Impedance check within headbox.

Software applications

- EEG record and review
- FFT Spectrum analysis
- Compressed spectral array
- Compressed density array
- Brain Mapping
- Digital HD Video
- Cerebral function monitoring
- Real-time spike detection
- Real-time seizure detection
- Source localization
- Sound playback
- Sleep (PSG) Software Package
- Compatible with Besa

The Sienna ULTIMATE EEG/PSG Amplifier can be configured with headboxes for LTM, PSG (Sleep), CFM, 10/20 and 32 channel bipolar EMG for Sports Medicine easily, simply by replacing the headboxes. The 150 gram lightweight amplifier has a patient alarm button as well as a body position sensor, which can transfer 'fall over' information to the nurse station.